



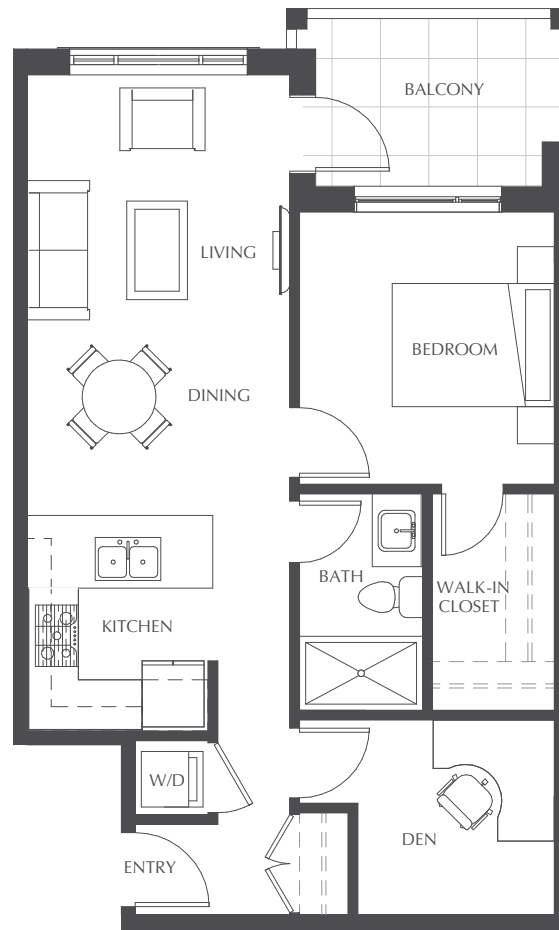
TOUCHSTONE
AT GOSPEL ROCK

A3

1 Bed + Den + 1 Bath

Interior: 692 Sq Ft

Exterior: 75 Sq Ft



TouchstoneGibsons.com

rare EARTH™
PROJECT MARKETING

Developed By
Greenlane
HOMES

The Developer reserves the right to make modifications to floor plans, features and/or finishes without notice. Sizes are based on architectural measurements. Renderings are artists concept only. E.&O.E.

